



SATHORN NAKORN BUILDING

BUILDING INFORMATION

PIPATANASIN

Building	Sathorn Nakorn Tower
Address	100 North Sathorn Road, Silom, Bangrak, Bangkok 10500
Year built	1997
Ownership Structure	Multiple ownership
Storey	32 Floor
Air Conditioning System	Water cooled Package
Air Conditioning Timing	06.00 - 22.00 hours.
O.T. Air	THB 500/ Hour
Passenger Lifts	12
Cargo Lift	1
Parking	1 : 100 (Fixed Space)
Security	24 hours security guards and CCTVs
Transportation	BTS - Chong Nonsi Station BRT - Sathorn Station MRT - Silom Station



General Information

Premises Offer:	Unit 14B, 14 th Floor at Sathorn Nakorn Tower
Area:	616 SQM.
Lease Terms:	3 years lease contract
Fit-out Period:	1 month free of charge
Rental Rate:	THB 750/ SQM./ Month* (Excl. of vat) will be divide by
	- Rental 60%
	- Service Fee 40%
Deposit:	3 months
Advance Rent:	1 month
Hand over Available:	Now
Renewal Adjust Rate:	15%

Utilities Fee

Parking Spaces:	100 : 1 Free of Charge (fixed space)
Additional Parking Space:	2,600 THB/ car/ Month (Excl. of vat)
Water Fee / Unit:	THB 16/ Cubic Meter
Electricity Fee / Unit:	Actual cost
Telephone Fee:	THB 2,500/ Line
Handover Standard:	Building's standard conditions**

* Price exclude 7% VAT

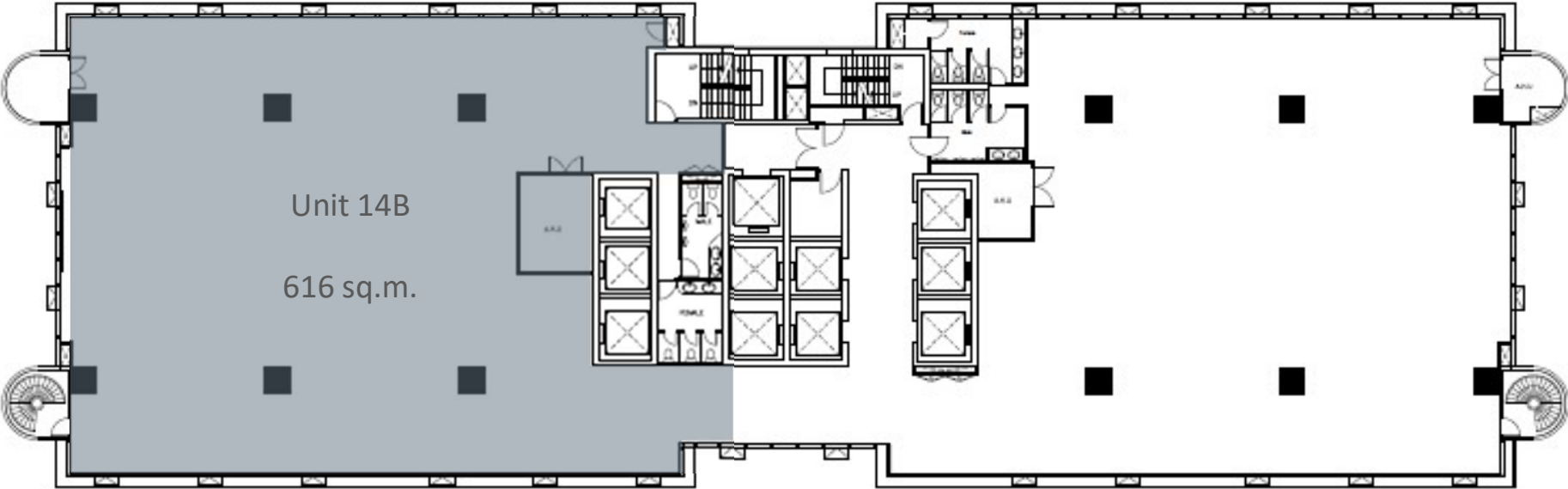
** Building's standard conditions: cement floor, standard handover lighting, painted wall

Cooling Water Fee

ชั่วโมงที่ใช้ต่อเดือน	ค่าน้ำระบายความร้อน (บาท/ ชม./ ตัน)
1 - 250	1.90
251 - 300	5.60
301 ขึ้นไป	8.90

FLOOR PLAN

Unit 14B, 14th Floor - STN



FACILITIES



au bon pain.



SUBWAY



LOCATION

PIPATANASIN

