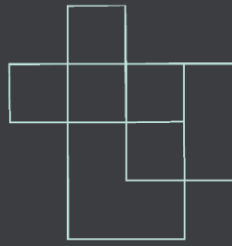


# PUNN

SMART WORKSPACE

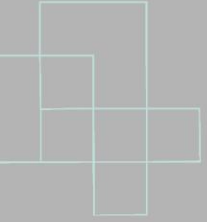


To integrate holistic design, technology, and sustainability to create a modern workspace that inspires creativity, collaboration, and productivity

**for the new working generation.**



PUNN



# BRAND CHARACTER

- High Quality of Life
- Creative & Innovative
- Best Value for Money

SMART



SHARING



SENSIBLE



MODERN



PUNN



SMART WORKSPACE

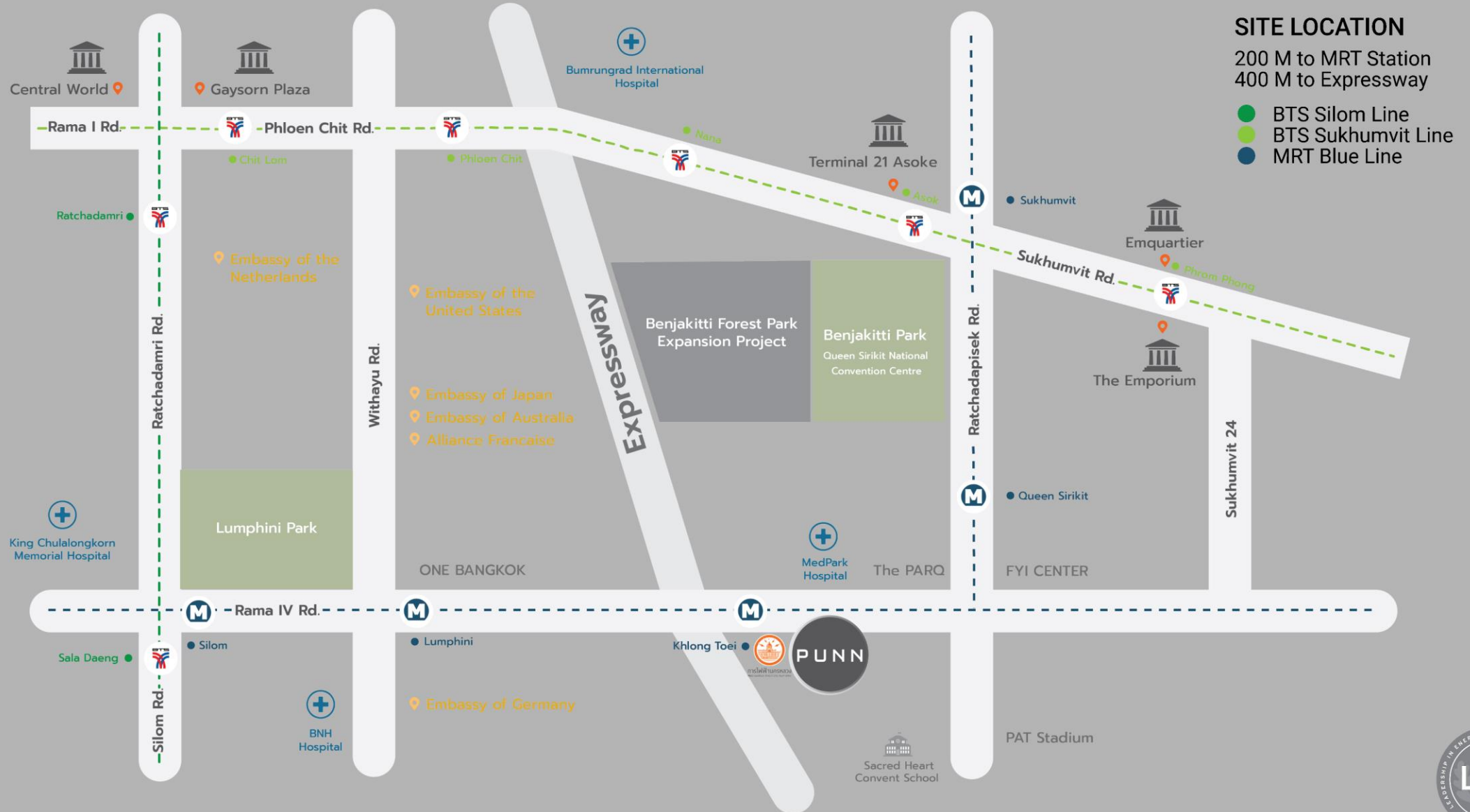
---

A NEW GENERATION  
OF **WORKSPACE**

FOR A NEW GENERATION  
OF **WORKING PROFESSIONALS**

---







PUNN

SMART WORKSPACE





PUNN

SMART WORKSPACE





PUNN

SMART WORKSPACE





PUNN

SMART WORKSPACE



PUNN

SMART WORKSPACE



# PROJECT HIGHLIGHTS



## FLEXIBLE AIR CONDITIONING HOURS

LEED Gold Certified



## LAMINATED IGU GLASS

LEED Gold Certified



## SMART LIGHTING

LEED Gold Certified



## THERMAL COMFORT

LEED Gold Certified



## COMMON PANTRY & DRINKING WATER

LEED Gold Certified  
And WELL Building  
standard



## TURNSTILE ACCESS & LIFT DESTINATION CONTROL

LEED Gold Certified



# PUNN

Completion : Q4 2023

Lettable Area : Approx. 22,500 sq.m.

Ceiling Height : 2.80 m.

Number of Floors : 28 floors

## Office High Zone

20th – 28th Floor  
Approx. 1,174 sq.m. / floor

## Office Low Zone

10th – 19th Floor  
Approx. 1,174 sq.m. / floor

## Co-working Space

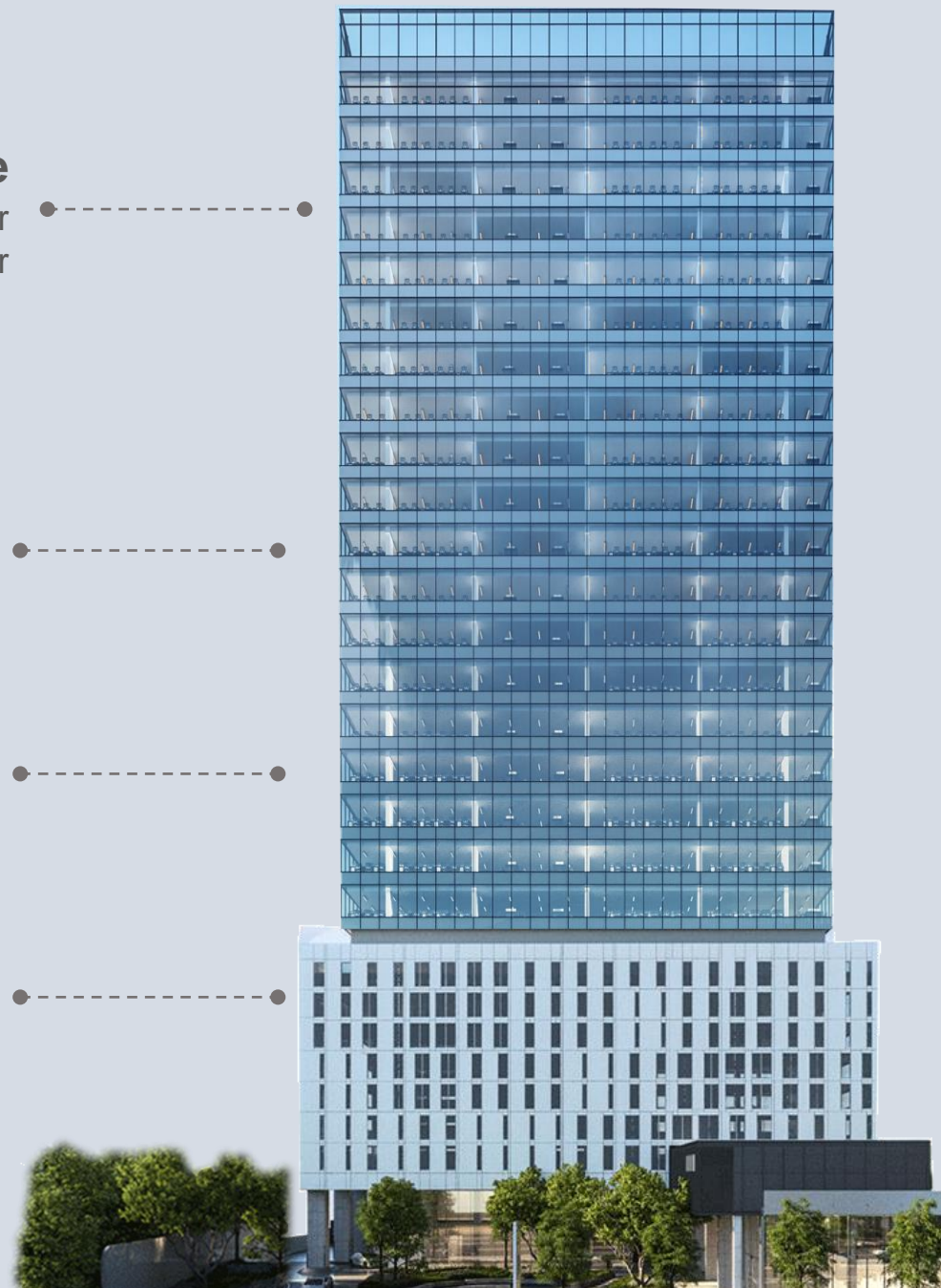
9th Floor

## Parking 361 Slots

2nd – 7th 308 Slots  
Basement 53 Slots

## Retail : G - M Floor

Approx. 955 sq.m.





TYPICAL FLOOR PLAN



- Whole Floor
- 1,174 Sq.m.
- Panorama view
- Column Free Floor Plate
- Knock out panel for internal staircase



## TYPICAL FLOOR PLAN

- Multi Tenant
- 1,092 Sq.m.
- Column free floor plate



# PUNN

# OUR SUCCESS



IN  
COLLABORATION  
WITH

# NYE ESTATE

# SMART WORKSPACE

LPN has been offering high-quality of fully integrated urban housing development projects to Thai society through 129 projects over the course of 30 years. Given that our priority is the quality of lives of the people, employees, customers, and society as a whole, we are determined to drive our organization towards "Sustainable Development".



LUMPINI  
**PLACE**



LUMPINI  
**selected**



LUMPINI  
**PARK**



LUMPINI  
**TOWER**

NYE ESTATE Co., Ltd. is one of Thailand's leading property developers with projects outstanding in striking designs that blend seamlessly with functionality, innovation, quality, and green commitment to society.



SUKHUMVIT  
**QUARTER 39**  
URBAN VILLA COLLECTION



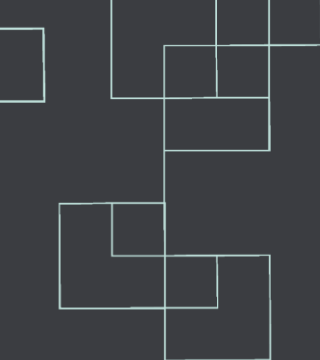
SUKHUMVIT  
**QUARTER 31**  
URBAN VILLA COLLECTION



**KRAAM**  
SUKHUMVIT 26



PARK **SILOM**



**PUNN**  
SMART WORKSPACE

THANK YOU

